



# HIAB X-HIPRO 408 E-5

0 1 2 3 4 5 6 7 8 9 10 11 12 13 14m

17 m

16

15

14

13

12

11

10

9

8

7

6

5

4

3

2

1

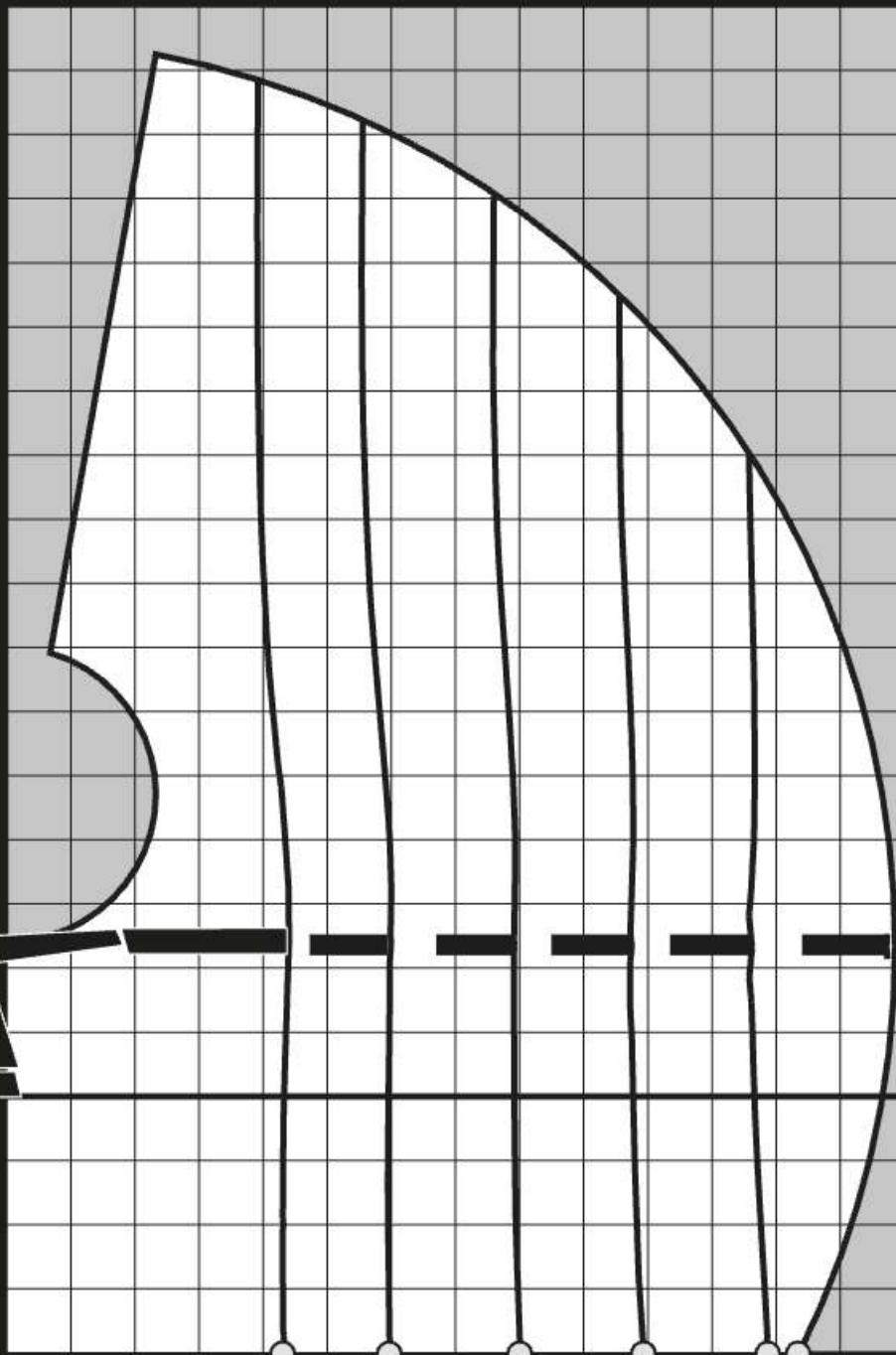
0

-1

-2

-3

-4



549-6265

**ADC Kg**

**8300**

**5900**

**4300**

**3400**

**2800**

**2340**

**Kg**

**7700**

**5400**

**3950**

**3100**

**2550**

**2120**

**10000 Kg - 3.5 m**



**HIAB X-HIPRO 408**  
**BUILT STRONG, MADE SMART**

# ELEVATE YOUR CONTROL AND PRECISION FOR EVERY LIFT



Heavy lifting is more than just raw power – it's about precision, speed, and complete control.

The HIAB X-HiPro 408 combines rugged design with smart technology. It's built to perform, built to last, and built to help you get the job done right, every time.

This is a remote-controlled CE-marked loader crane (non-CE version also available) with 38 tonne-metre capacity and a maximum outreach of 22.5 metres (extendable with JIB).

At the heart of this high-performance crane is SPACEevo – the brain inside the HiPro control system. It enhances productivity, safety, and efficiency through intuitive controls, advanced sensor-based safety systems, and optimized energy use. Its open modular

platform also ensures the system is future-proof, enabling new updates and technologies.

This solution turns the crane into a finely tuned instrument, letting you work smoothly and confidently in the toughest conditions – from tight urban spaces to complex trench plate lifts.

More than just a machine, the HIAB X-HiPro 408 is a dependable partner that's built for professionals tackling demanding tasks every day. Perfect for applications in logistics, construction, transportation, equipment rental, and beyond, it's the smart choice for any business that demands reliable heavy lifting.





## STANDARD FEATURES



### Premium warranty

All HIAB loader cranes come with a two-year standard warranty, with the option to extend to a third year. Steel components are covered for five years, or up to 100,000 load cycles, protecting your investment and ensuring a long service life.



### Automatic Speed Control (ASC)

This feature, unique to Hiab, gives an increase in lifting capacity of up to 10%, all in one smooth, continuous motion. It engages automatically as you reach the regular capacity limit, meaning that you can still lift the load where other cranes would have come to a complete stop. To compensate for the capacity boost, the speed of the inner and outer boom is slightly reduced, but capacity ceiling, safety and efficiency are significantly increased.



### nDurance

Protect your investment and secure long-term performance with nDurance - the anti-corrosive protection. It's a technologically advanced pre-treatment and paint process, based on nano technology combined with state-of-the-art e-coating and powder painting, and this process will keep your crane protected and visually appealing year after year.



### Connectivity

Our equipment comes with connectivity enabled which, in combination with our connected services, allows you to be in constant contact with your equipment, assets and colleagues to enhance your productivity, efficiency and safety.



### Automatic Duty Control (ADC)

Our unique and patented ADC function is the only fully automatic system of its type on the market. It can boost your crane's listed capacity in suspended load applications by 10% without imposing additional stress or fatigue on the steel structure, reducing maintenance over the lifetime of the crane while enhancing flexibility. With ADC, you can safely perform lifts that would otherwise exceed the crane's capacity, and you can work without interruption when a high-capacity lift is needed.



### Continuous slewing

Continuous slewing gives you 360° freedom for faster lifts, allowing you to work without unnecessary backtracking while reducing downtime and speeding up load cycles. You can always choose the optimal lifting path, making operations safer and more efficient. The HIAB X-HiPro 408 is built for high precision at long reach or maximum lifting power close to the truck, depending on your needs.



### Load Stability System for vertical movements (LSS-V)

LSS automatically compensates for unintentionally excessive lever moment in vertical operations, making crane operation faster and smoother while protecting the cargo, the crane and the surroundings against potential damage.

## BUILT TO LAST

Engineering excellence, industry-leading workmanship, durable, innovative materials and long-term peace of mind.

**5 YEARS** industry-leading warranty on steel structure and body modules.

**2 YEARS** warranty for general parts including:

- Painting
- Seals
- Hoses
- Electric components



## OPTIONAL FEATURES



### Semi-Automatic Folding (SAF)

Assists with automatic folding and unfolding of the crane, reducing setup time and operator effort while helping you maximize productivity.



### Synchronized Distance Control (SDC)

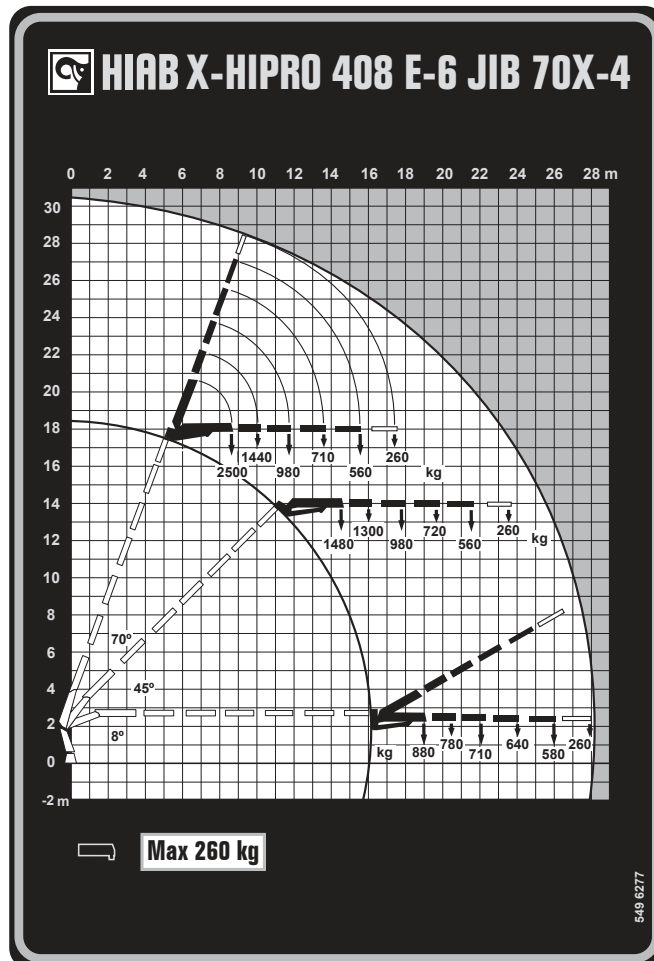
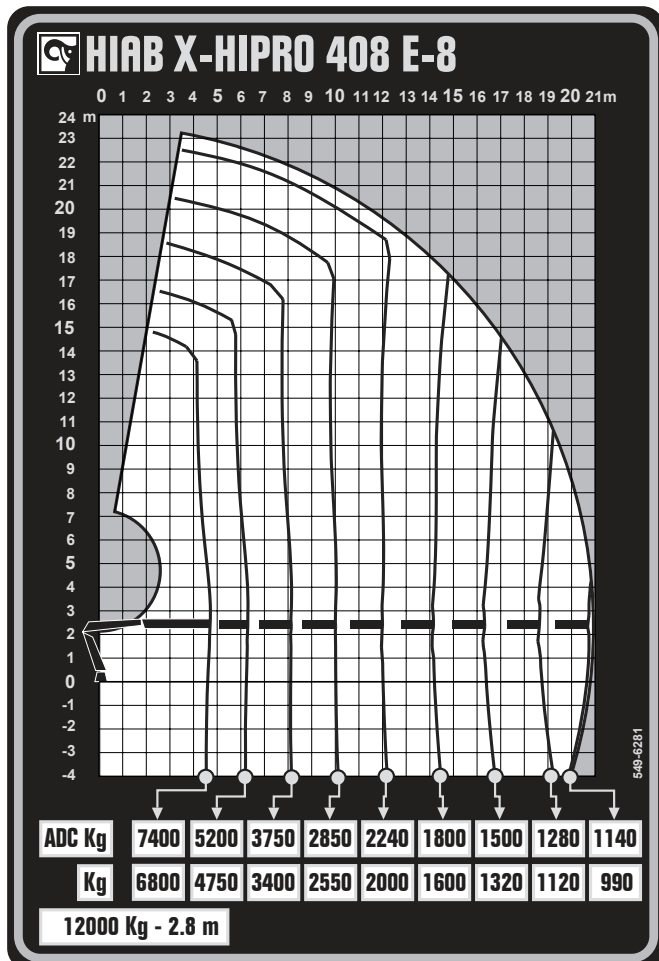
Automatically keep the load at a set distance from the crane's tip while only having to operate the extension movements from the remote with SDC. This reduces the need to operate multiple levers at the same time while increasing safety. It is very useful when handling loads that are farther and higher away from the operator, where visibility becomes the main obstacle to a safe movement.



# TECHNICAL SPECIFICATIONS

Technical Data	X-HIPRO 408 E-8	X-HIPRO 408 E-6 J70X-4
Lifting Capacity (kNm)	344	353
Outreach, hydraulic extensions (m)	20,9	26,1
Outreach, with manual extension (m)	22,4	27,8
Installation space required, rotation area included (mm)	1 406	1 404
Height in folded position (mm)	2 458	2 722
Weight in standard version, without stabilizers (kg)	4 497	5 005
Weight, stabilizer equipment (kg)	458-873	458-873
Oil flow	140l/m	140l/m

## Load diagrams











## GET THE KNOWLEDGE YOU NEED

HiConnect's telematics solution provides near real-time insights into over 100 parameters, such as battery status, route details, driver safety, and maintenance requirements. The comprehensive information is accessible online via the HiConnect portal.

### Data-driven decisions

HiConnect lets you grasp your equipment's usage patterns, locations, and capacities, facilitating informed decisions to reduce downtime and boost asset efficiency, utilization, and safety.

### Location control

Real-time tracking of each unit, along with monitoring of driving routes and times, enables the optimization of fuel and battery usage for upcoming tasks.



